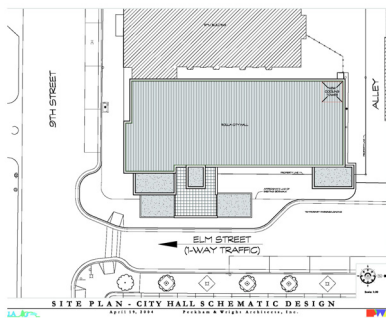
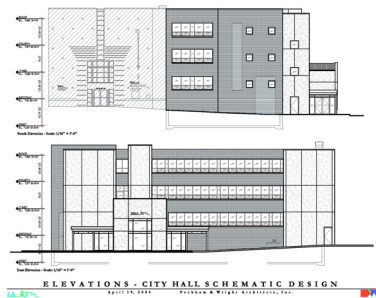
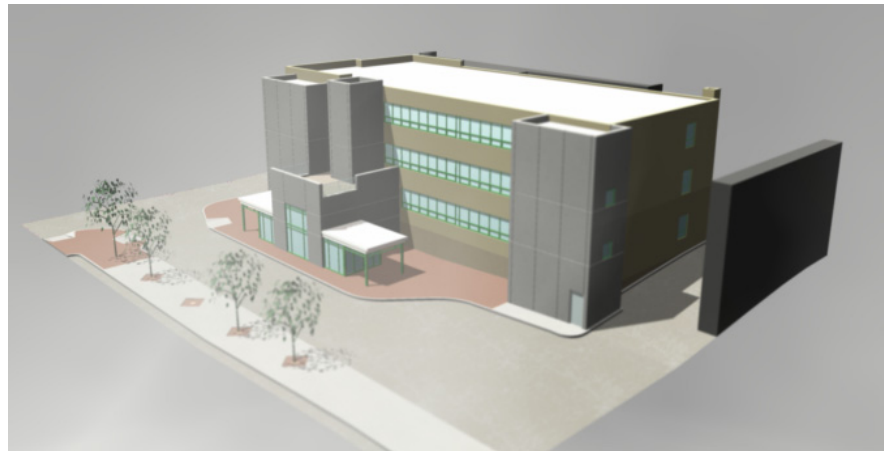
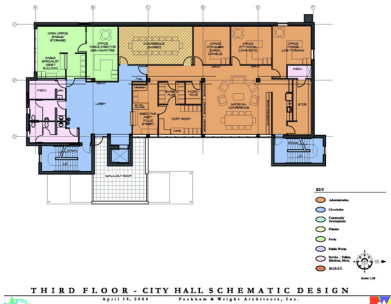


Rolla City Hall Renovation

Rolla, Missouri



PWA produced the above 3D computer-generated models and presentation graphics to help guide the City of Rolla through the programming and design process.

Working closely with the City of Rolla, Peckham & Wright Architects, Inc. developed a plan to renovate the existing 21,600 square foot city hall, originally constructed in 1948. The design for the new city hall adds 6,900 square feet to the four-story masonry building and includes two new four-story stair towers, a five-stop elevator tower, and a new entry lobby with a walkout roof-plaza.

To accommodate these additions and new windows a number of penetrations were cut through the existing building. This required extensive analysis of existing structure and development of innovative solutions to work around existing footings, columns, and beams.

The renovation of the building also involved the complete interior demolition of the building including all interior finishes, partitions, mechanical and electrical equipment. Significant coordination with City of Rolla was required at different stages of the construction

phase to accommodate the City performing portions of the work themselves within a tight deadline.

PWA provided the City of Rolla with the following services for this project:

- Space Needs Analysis with 35-year projections
- Programming
- Site Analysis and Recommendations
- Design charrettes with city staff and the community
- Schematic Design
- 3D modeling
- CAD design
- Presentation Drawings
- Public presentations
- Design Development
- Construction Documents
- Bidding
- Construction Administration

