

TEXTRON Automotive Interiors

Columbia, Missouri

To encourage development, many communities compete to attract corporations that are planning business expansions. Columbia's strong, stable local economy and the work ethic of the communities people, enticed the division of TEXTRON, Inc. to choose Columbia as the location for its new automated production, manufacturing and administrative headquarters. Davidson Instrument Panel began in 1857 as the Davidson Rubber Company. As a division of TEXTRON, the company grew to become the world's largest independent automotive instrument panel producer. Now named TEXTRON/Automotive Interiors,

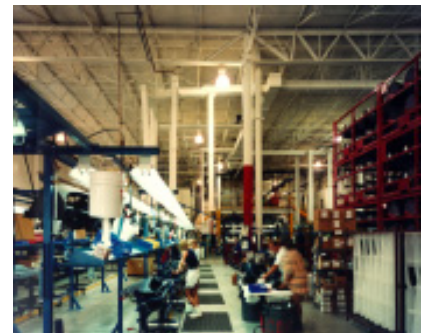


The quality of workers available in the community was a major concern for TEXTRON.

the facility requires precise dimensional specifications for manufacturing production and energy efficiency.

The Columbia plant contained 63,000 square feet of manufacturing space, as well as 17,000 square feet of administrative offices, conference and training rooms and a cafeteria. Locating the offices in the front of the building brought the scale of the large manufacturing area to a more comfortable level.

The site included 43 acres. This allowed for planned future expansion, as well as the option for selling sites to companies that supply raw materials to TEXTRON.



"...a job well done...we ended up with a building which met our cost targets and which, I feel, is an excellent value."

*- Joseph McCormick
Facility Standardization
Manager, TEXTRON*



Although an industrial building, TEXTRON is inviting to visitors.

